

NIKKEN MAGSTEPS® — MAGSTRIDES™ — KIDSTRIDES™

THE FACTS

- Nikken Magsteps are revolutionary — the original magnetic insoles, first produced nearly 30 years ago. The first Nikken product, they introduced the world to wellness technology.

- The soothing massage nodules in Nikken Magsteps were inspired by the pebbles on the floor of a traditional Japanese public bath. Walking on these pebbles is soothing and relaxing. Nikken founder Isamu Masuda had a brilliant idea: create an insole that would provide this comfort all day long.



- Nikken remains the leader in wellness by constantly redesigning and updating its technology. The original Magsteps introduced decades ago are far from identical to today's Magsteps, Magstrides and Kidstrides. These insoles represent the latest advances in design and engineering.

- Nikken magnetic insoles are worn by millions of people all over the world. Foot comfort has a major effect on overall comfort and relaxation levels, and these users appreciate the comfort that Magsteps, Magstrides and Kidstrides provide.

- Diabetes is one of the biggest threats to health — and the problem is growing. The American Diabetes Association says that just 2-1/2 hours of exercise per week, in combination with proper diet, can significantly lower the risk of developing the disease. No time to exercise? Combine Nikken insoles with Nikken CardioStrides™! Walking can also help you

lose pounds and inches, improve fitness, increase energy levels, and lower cholesterol.

- Nikken Magstrides use the same advanced magnetic technology as Magsteps, in a product designed for active wear. The ventilated, three-layer cushioning helps absorb shock from running, jumping or other strenuous sports.

- The Far-Infrared Technology in Magstrides and Kidstrides uses a natural form of energy. Ceramic-reflective fibers absorb energy in all wavelengths, but reflect it back only in the far-infrared range. The combination of Far-Infrared Technology and ventilated design helps keep feet comfortable.

- Magsteps and Magstrides are available in three trim-to-fit sizes for men and women. Kidstrides are a trim-to-fit size for child or small adult feet.

PRODUCT SPECIFICATIONS

ITEM CODE	DESCRIPTION	SUGGESTED RETAIL	
#2010	Kidstrides	US 37.00	CN 55.00
#2020	Magsteps - SM sizes 5-9	US 60.00	CN 90.00
#2021	Magsteps - MED sizes 7-12	US 60.00	CN 90.00
#2022	Magsteps - LG sizes 13-18	US 70.00	CN 105.00
#2024	Magstrides - SM sizes 5-9	US 64.00	CN 96.00
#2025	Magstrides - MED sizes 7-12	US 64.00	CN 96.00
#2026	Magstrides - LG sizes 13-18	US 80.00	CN 120.00
#4124	Magsteps/Magstrides Twin Pak - SM sizes 5-9	US 106.00	CN 159.00
#4125	Magsteps/Magstrides Twin Pak - MED sizes 7-12	US 106.00	CN 159.00
#4126	Magsteps/Magstrides Twin Pak - LG sizes 13-18	US 127.00	CN 190.00

AVAILABILITY

US: YES CN: YES

FEATURED NIKKEN TECHNOLOGY

Nikken EQL Magnetic Technology, Nikken Far-Infrared Technology (Magstrides & Kidstrides only.)

WEIGHT

0.45 to 1.70 depending on size ordered

MATERIALS CONTAINED IN PRODUCT

Magsteps - Neoprene, magnetic ferrite

Magstrides and Kidstrides - Neoprene, polyurethane, polyester, cotton, magnetic ferrite, urethane foam, nylon, ceramic-reflective fibers

HOW TO USE

Trim insoles to fit, place in shoes.

WARRANTY INFORMATION

1-year standard limited warranty. See your Independent Nikken Wellness Consultant for information.

Quick Sharing Tip

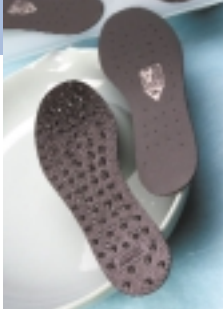
The Weintraub research study — published in the Archives of Physical Medicine and Rehabilitation, a leading medical journal — investigated magnetic insoles and treatment of pain. A group of study participants using the insoles reported measurable improvement in their symptoms. The magnetic insoles used in the study are Nikken technology! Although it remains Nikken policy to not make any therapeutic claims regarding our products, this study reflects the growing interest in non-traditional wellness approaches.

Nikken insoles promote wellness through proven methods. Magsteps have unique massage nodules, and massage promotes better circulation, a health benefit.

Find out from your upline about the renowned Nikken strength test!

Nikken Magsteps and Magstrides represent *energy wellness* — a non-invasive, cost-effective lifestyle choice, without the side effects of drugs or surgery.

NIKKEN MAGSTEPS® — MAGSTRIDES™ — KIDSTRIDES™



The product that began the wellness revolution! Nikken introduced magnetic wellness technology with the original Magsteps.

Q. What are Magsteps?

A. Magsteps are magnetic insoles with exclusive patented Nikken EQL Magnetic Technology, and strategically shaped and placed nodules for a comfortable foot massage all day long. Magsteps can be worn in casual or dress shoes.

Q. What are Magstrides?

A. Magstrides are sports or active wear insoles. They feature EQL Magnetic Technology, Nikken Far-Infrared Technology for natural temperature regulation, and high-density shock-absorbing foam to reduce impact.

Q. What are Kidstrides?

A. Kidstrides are designed for child-size or small adult feet. They include the same EQL Magnetic Technology, Far-Infrared Technology and sports cushioning as Magstrides.

Q. What makes these products different from any other magnetic insoles?

A. Only Nikken EQL Magnetic Technology can provide evenly distributed magnetic coverage over an entire surface. Nikken insoles combine this magnetic technology with massage nodules (Magsteps) or Far-Infrared Technology (Magstrides and Kidstrides).

Q. What are the benefits of Nikken EQL Magnetic Technology?

A. The 100% magnetic surface means that magnetic energy reaches every part of the sole. Because the coverage is complete, there is no concern over slipping or incorrect alignment. In addition, the EQL design features equilateral triangles and alternating magnetic poles that make the coverage perfectly uniform.

Q. What are the benefits of Nikken Far-Infrared Technology?

A. Far-Infrared Technology (in Magstrides and Kidstrides) provides natural temperature regulation, using the body's own energy and reflecting it back in the form of far-infrared waves.

Q. What is the Weintraub study regarding magnetic insoles?

A. A double-blind, controlled scientific research study evaluated the use of magnetic insoles (using exclusive Nikken technology) in treating pain associated with diabetes. A group of participants using the insoles showed measurable improvement in their symptoms. These results were published in the Archives of Physical Medicine and Rehabilitation, a prestigious journal affiliated with the American Congress of Rehabilitation Medicine and the American Academy of Physical Medicine and Rehabilitation. The study may be the first in a series of scientific discoveries regarding Nikken energy wellness products!

